



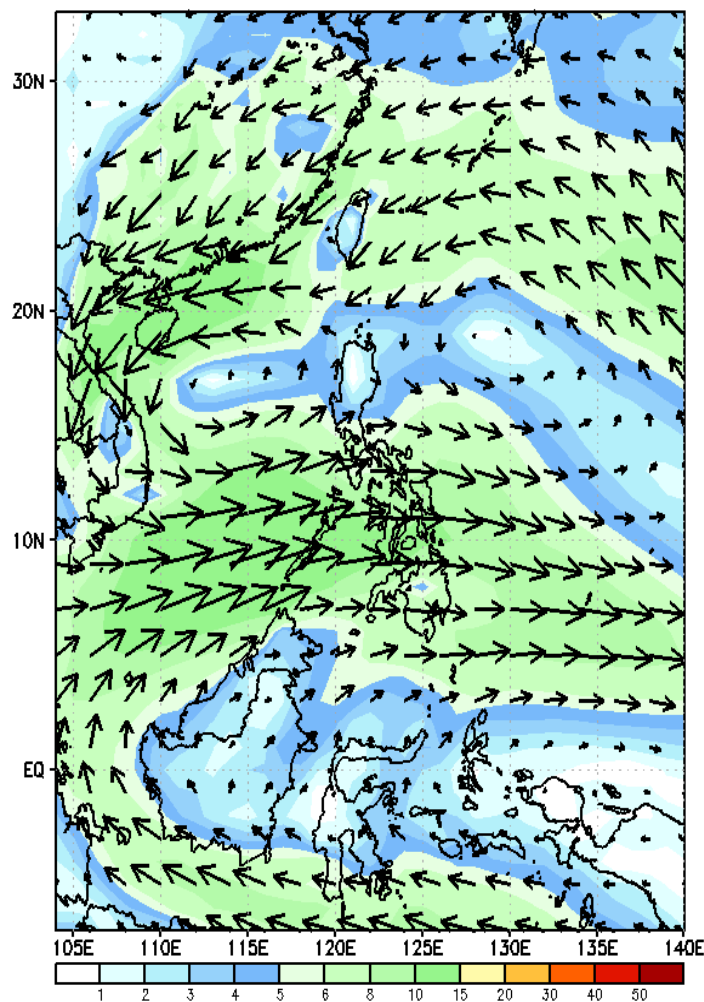
Week 1 & Week 2 Forecast for the Philippines using GEFS Model



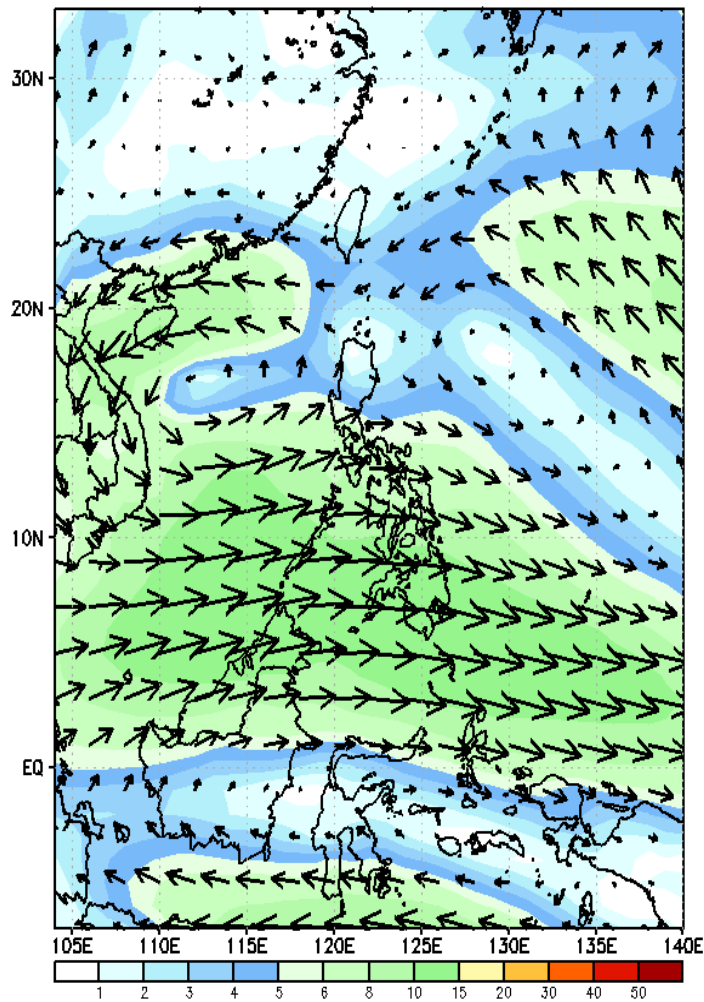
GEFS Week-1 Wind Forecasts:

Week 1: Oct 25-31, 2024

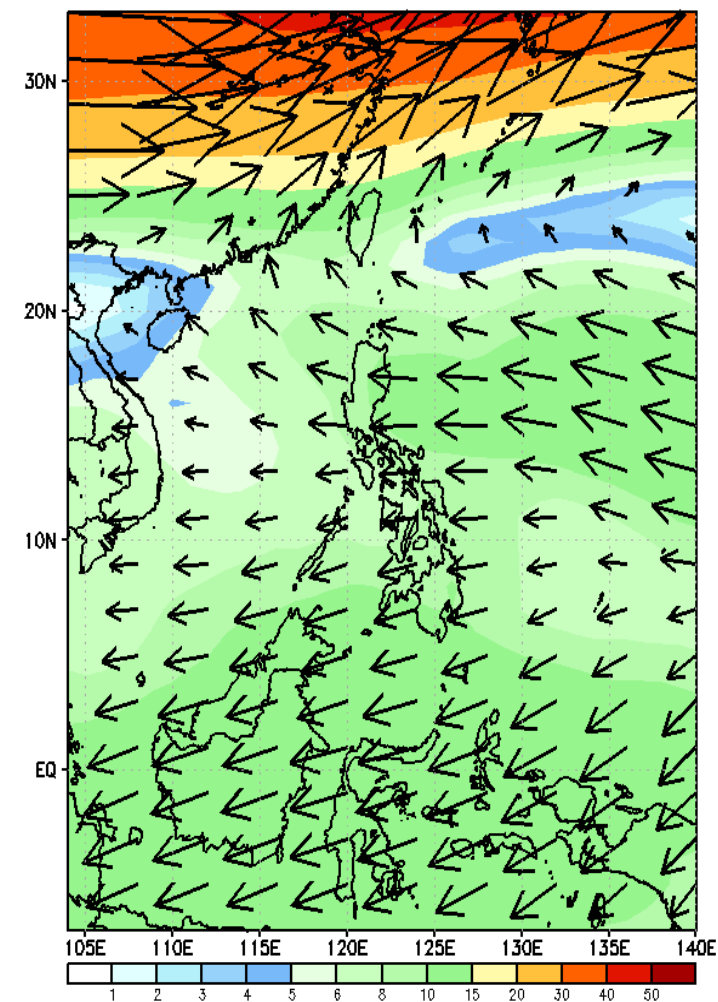
GEFS Week-1 850-hPa Wind Total
Valid: 20241025 - 20241031



GEFS Week-1 700-hPa Wind Total
Valid: 20241025 - 20241031



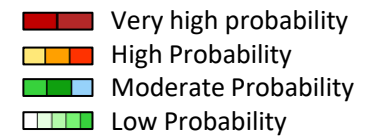
GEFS Week-1 200-hPa Wind Total
Valid: 20241025 - 20241031



Westerly to Southwesterly windflow affecting most parts of the country. Northeasterly winflow affecting Northern and Extreme Northern Luzon.

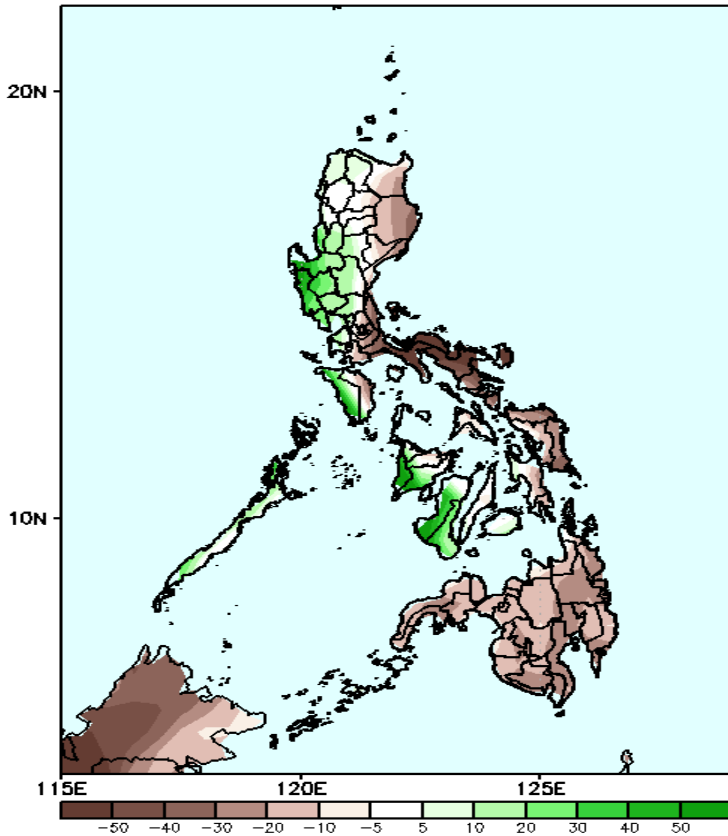


Precipitation Anomaly and Exceedance Probability > 25/50 mm



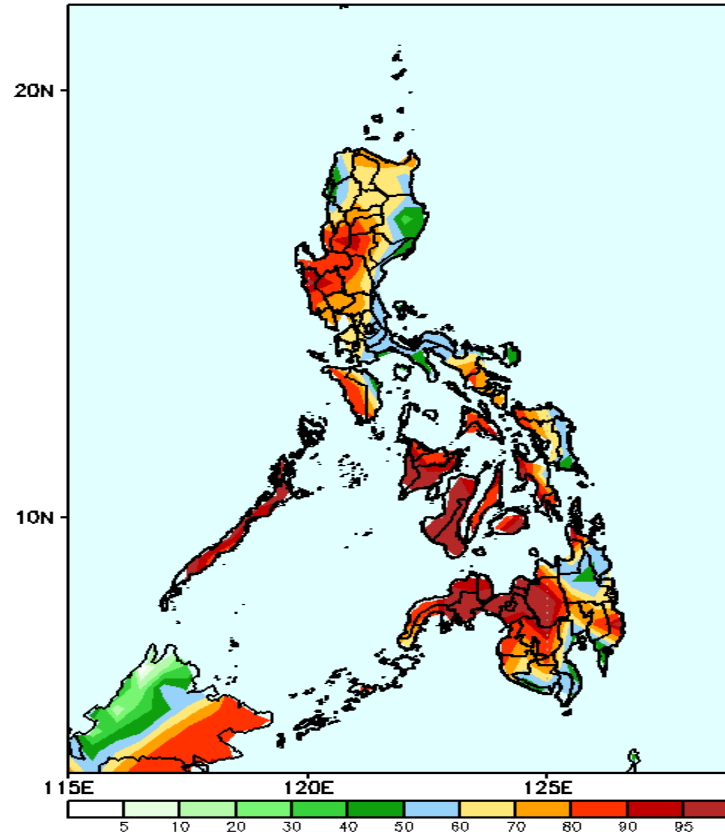
Week 1: Oct 25-31, 2024

GEFS Week-1 Precip Anomaly
Valid: 20241025 - 20241031



Rainfall deficit of 20-60mm is expected in most parts of the country except in Central Luzon, Occ. Mindoro and western Visayas where 10-50mm increase of rainfall is expected.

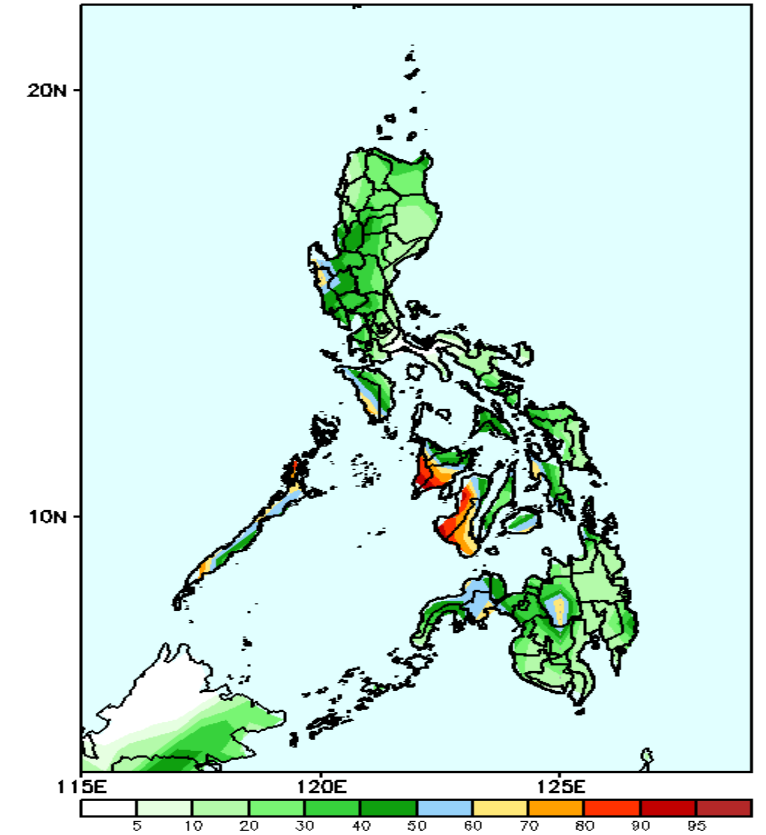
GEFS Week-1 Exceedance Prob. > 25mm
Valid: 20241025 - 20241031



Probability to Exceed 25mm

- High to very high over most parts of Central & Northern Luzon, Occ. Mindoro, Palawan, Visayas & western and central Mindanao
- Moderate to high over Isabela, Ilocos Norte, Abra, the rest of Southern Luzon, Eastern Samar, eastern and southern parts of Mindanao.

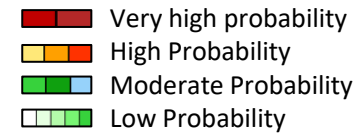
GEFS Week-1 Exceedance Prob. > 50mm
Valid: 20241025 - 20241031



Probability to Exceed 50mm

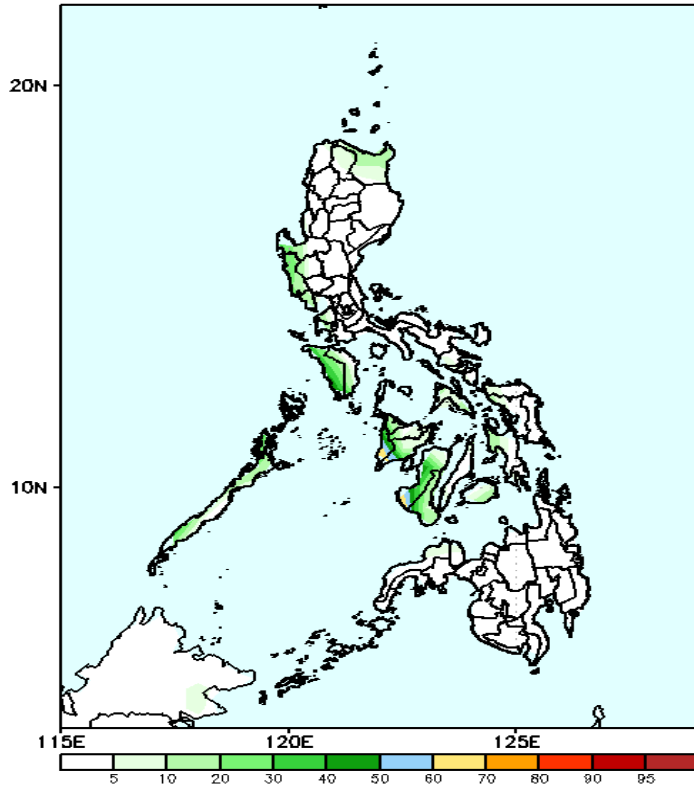
- High to very high over the Antique, Guimaras, western part of Iloilo, and NIR;
- Moderate to high over Pangasinan, Zambales, Bataan, the rest of Panay Island, Palawan, Occidental Mindoro, Batangas, Extreme Northern Luzon, and NIR, Bukidnon, and Zamboanga Peninsula;
- Low to moderate over the rest of the country.

Exceedance Probability > 100/150/200 mm



Week 1: Oct 25-31, 2024

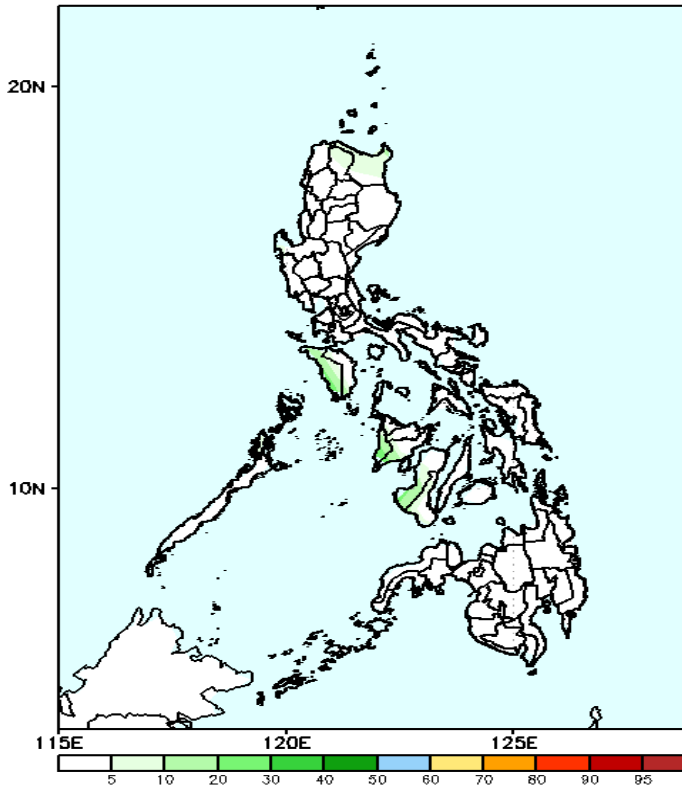
GEFS Week-1 Exceedance Prob. > 100mm
Valid: 20241025 - 20241031



Probability to Exceed 100mm

- Moderate to high over Antique, western part of Iloilo, the northern part of Palawan, the southern part of Occidental Mindoro, Antique, Guimaras, and the western part of Iloilo and Negros Occidental;
- Low over the rest of the country;

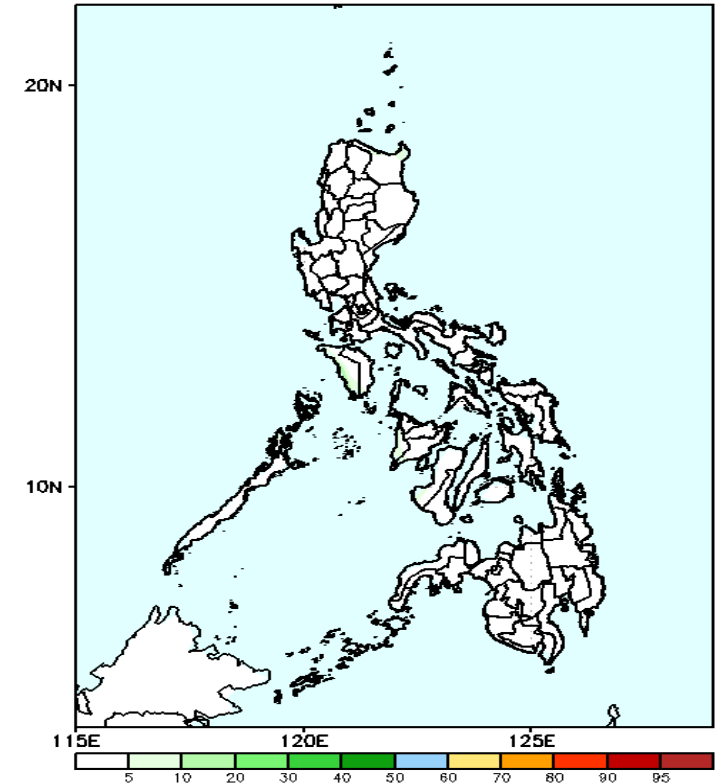
GEFS Week-1 Exceedance Prob. > 150mm
Valid: 20241025 - 20241031



Probability to Exceed 150mm

- Low across the country.

GEFS Week-1 Exceedance Prob. > 200mm
Valid: 20241025 - 20241031



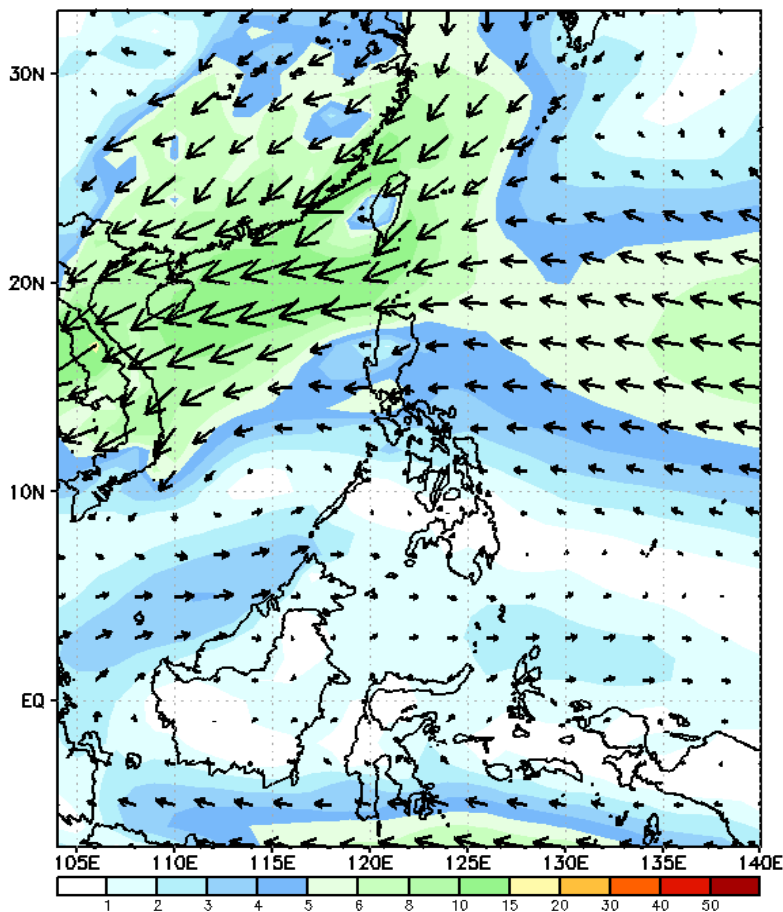
Probability to Exceed 200mm

- Low across the country.

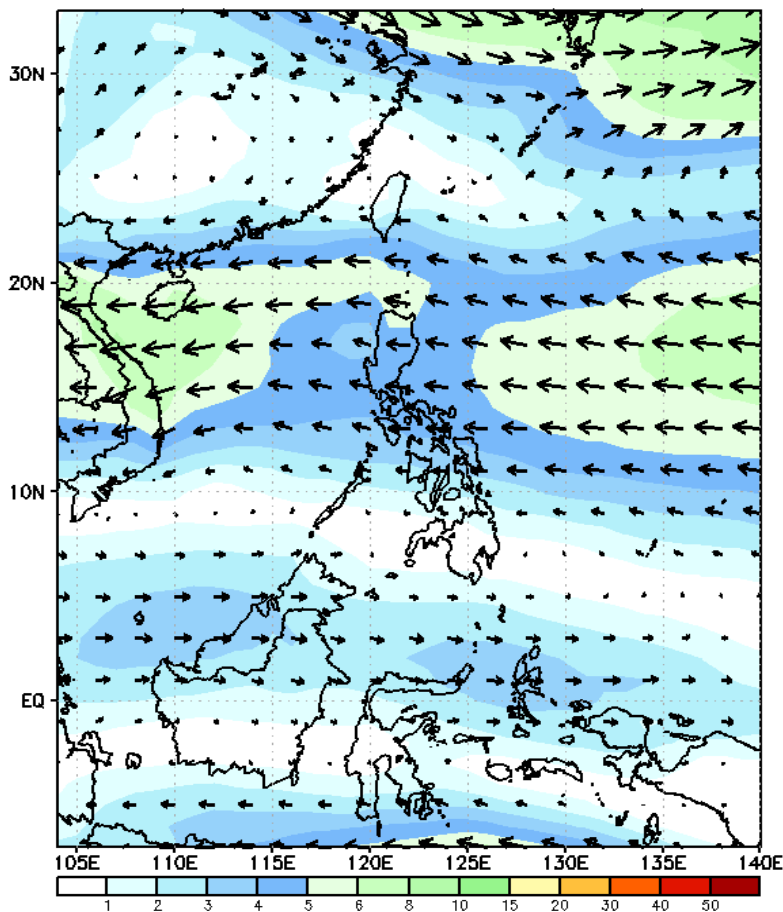
GEFS Week-2 Wind Forecasts:

Week 2: Nov 01-07, 2024

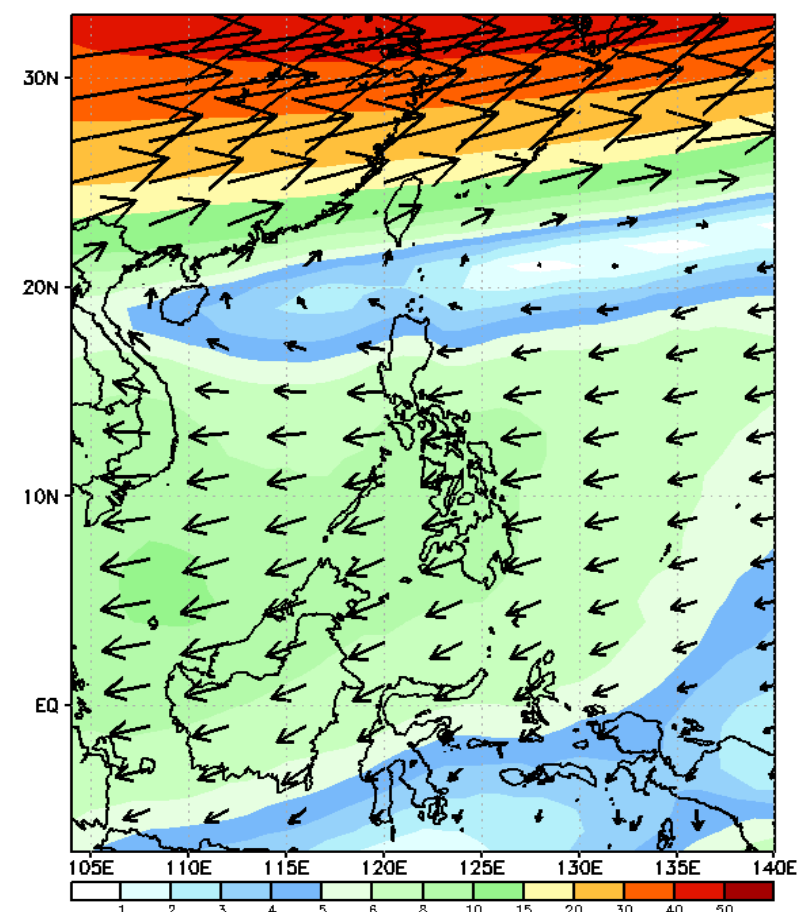
GEFS Week-2 850-hPa Wind Total
Valid: 20241101 - 20241107



GEFS Week-2 700-hPa Wind Total
Valid: 20241101 - 20241107

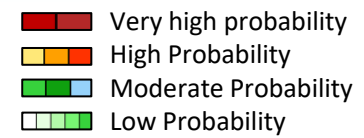


GEFS Week-2 200-hPa Wind Total
Valid: 20241101 - 20241107



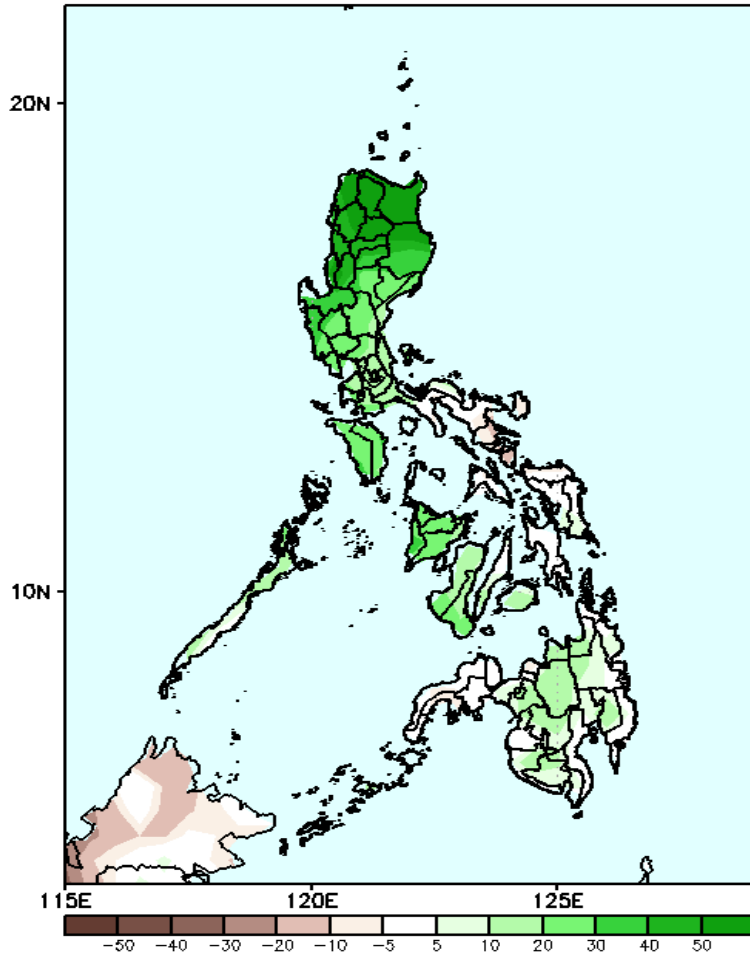
Northeasterly windflow is forecasted to affect Extreme Northern. Easterlies will likely affect the rest of the country.

Precipitation Anomaly and Exceedance Probability > 25/50 mm



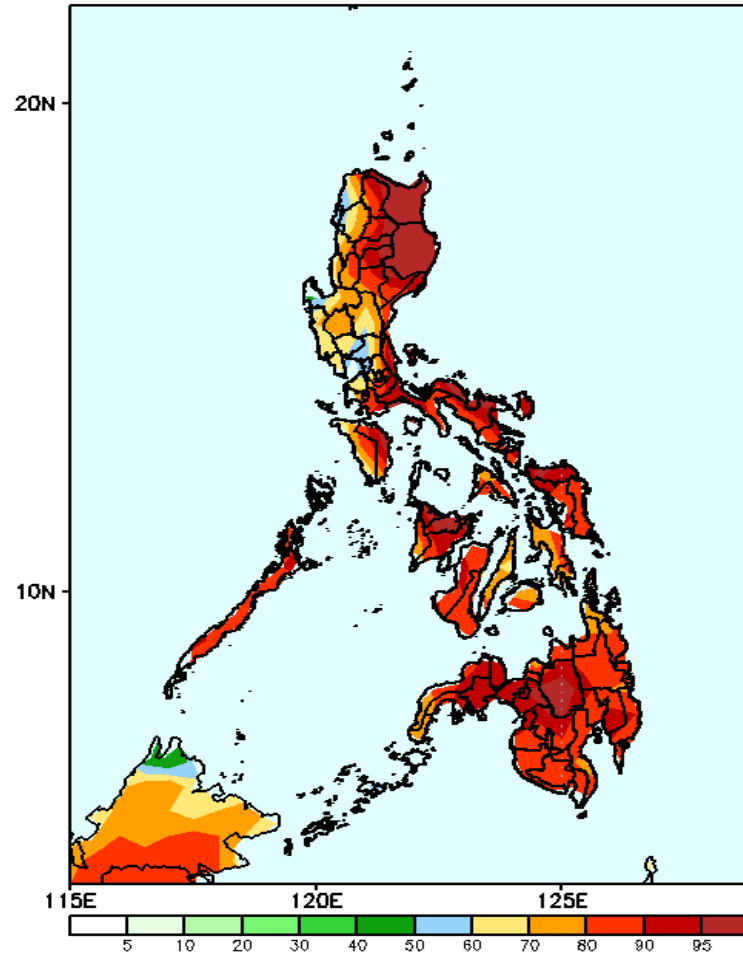
Week 2: Nov 01-07, 2024

GEFS Week-2 Precip Anomaly
Valid: 20241101 - 20241107



Increase of rainfall of more than 50mm is likely in most parts of Northern Luzon; 20-50mm in Central and Southern Luzon, western Visayas, Bohol Misamis Oriental and central parts of Mindanao.

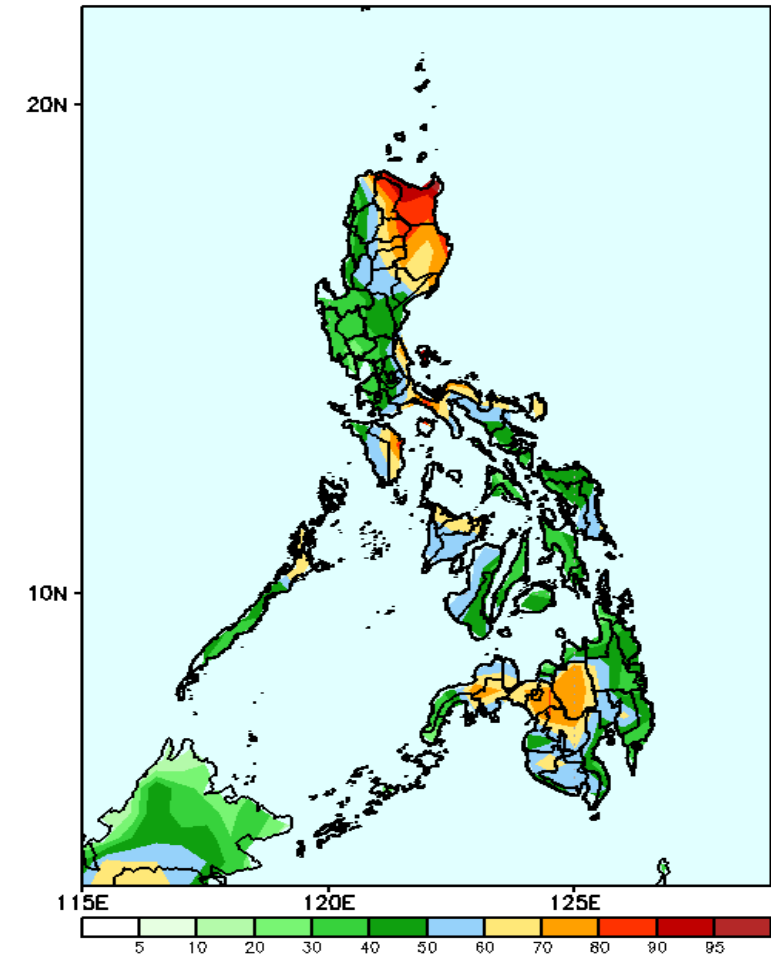
GEFS Week-2 Exceedance Prob. > 25mm
Valid: 20241101 - 20241107



Probability to Exceed 25mm

- High to very high over most parts of the country

GEFS Week-2 Exceedance Prob. > 50mm
Valid: 20241101 - 20241107

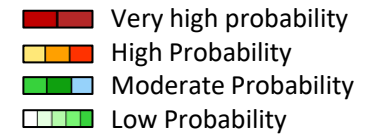


Probability to Exceed 50mm

- High to very High over Cagayan Valley and most of CAR.
- Moderate to high over the rest of the country.

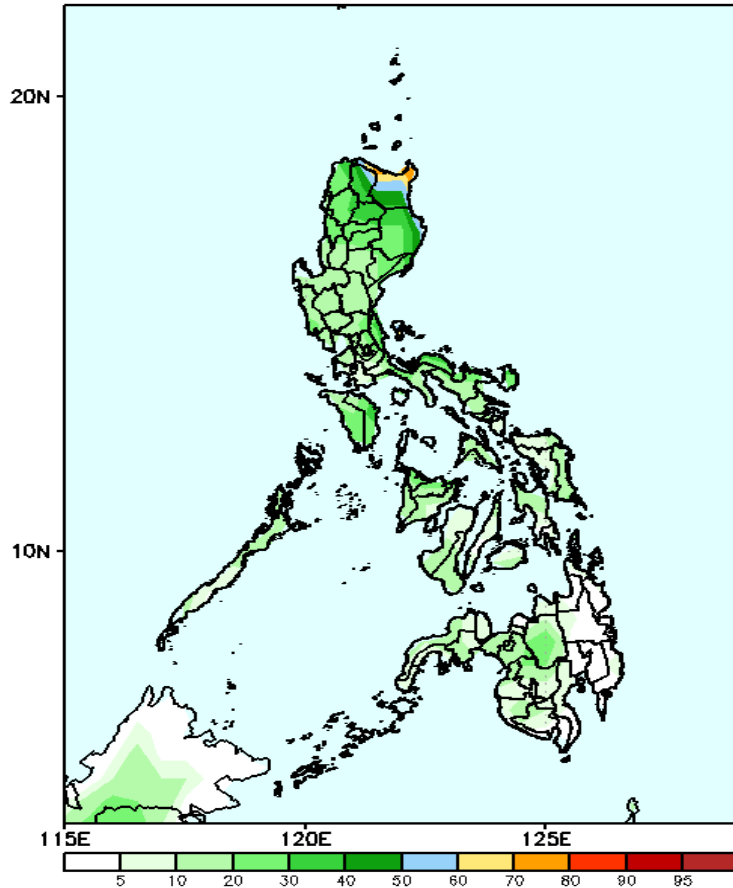


Exceedance Probability > 100/150/200 mm



Week 2: Nov 01-07, 2024

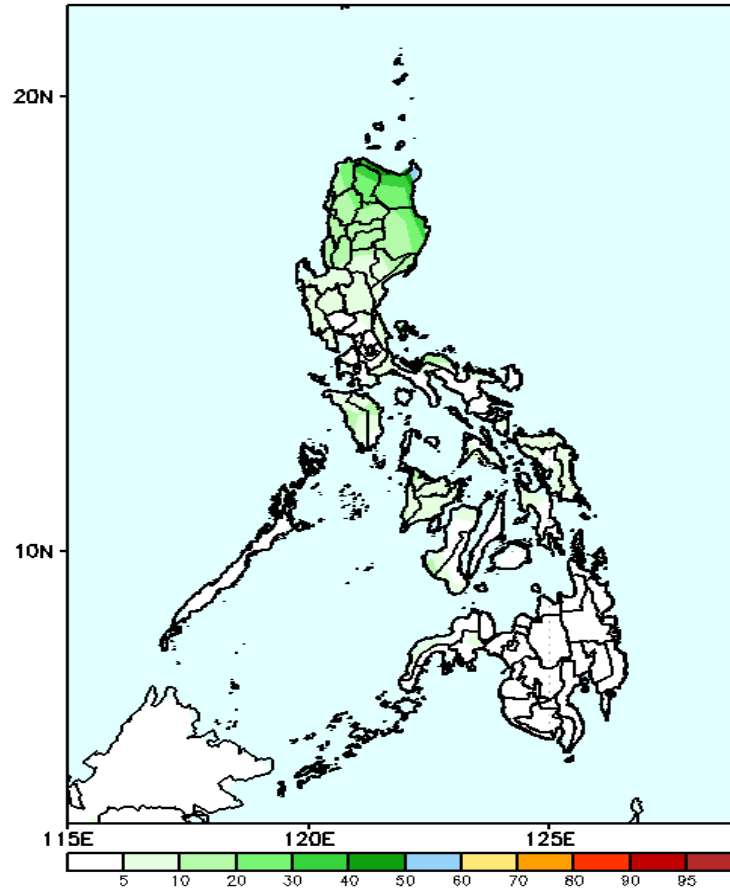
GEFS Week-2 Exceedance Prob. > 100mm
Valid: 20241101 - 20241107



Probability to Exceed 100mm

- Moderate to high over Cagayan and the eastern sections of Apayao and Isabela.
- Low to moderate over the rest of the country.

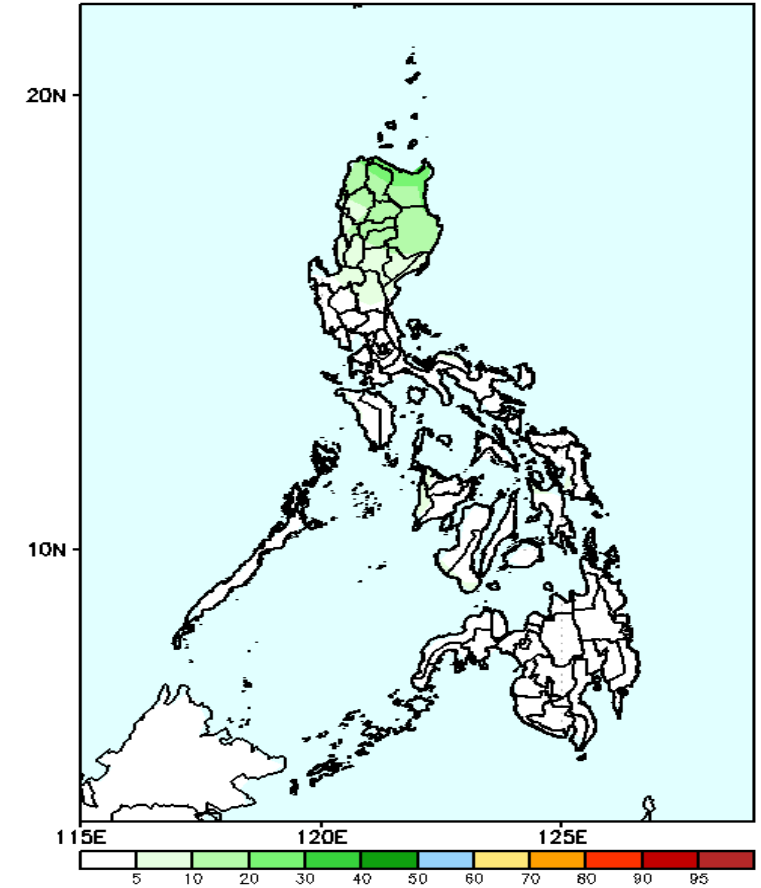
GEFS Week-2 Exceedance Prob. > 150mm
Valid: 20241101 - 20241107



Probability to Exceed 150mm

- Moderate to high over Extreme northern Luzon;
- Low across the country.

GEFS Week-2 Exceedance Prob. > 200mm
Valid: 20241101 - 20241107

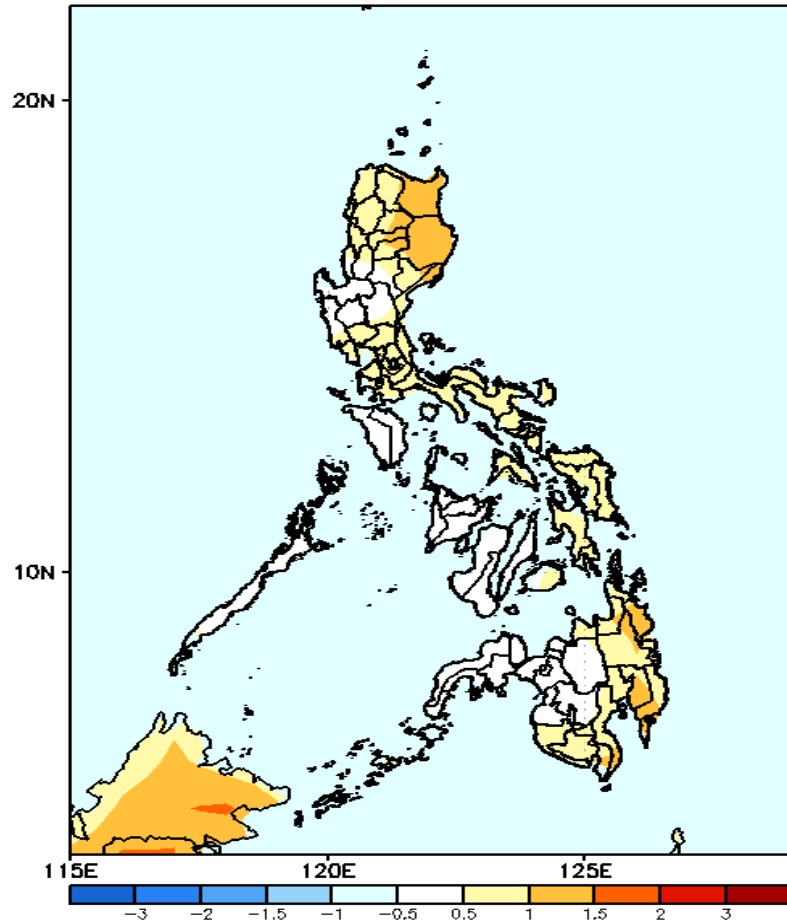


Probability to Exceed 200mm

- Low across the country.

GEFS Week-1 & 2 Forecasts: T2m Anomaly

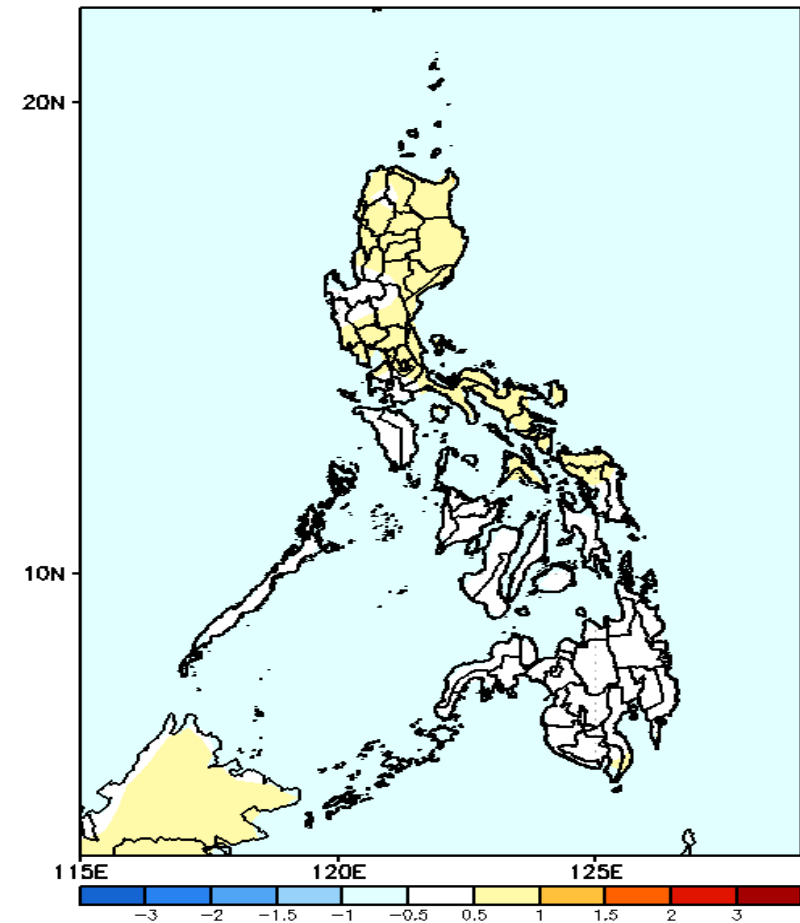
GEFS Week-1 T2m Anomaly
Valid: 20241025 - 20241031



2m Temperature Week 1: Oct 25-31, 2024

Near to slightly warmer than average surface air temperature will likely be experienced in most parts of the country.

GEFS Week-2 T2m Anomaly
Valid: 20241101 - 20241107



2m Temperature Week 2: Nov 01-07, 2024

Near to slightly warmer than average surface air temperature will likely be experienced in most parts of the country.